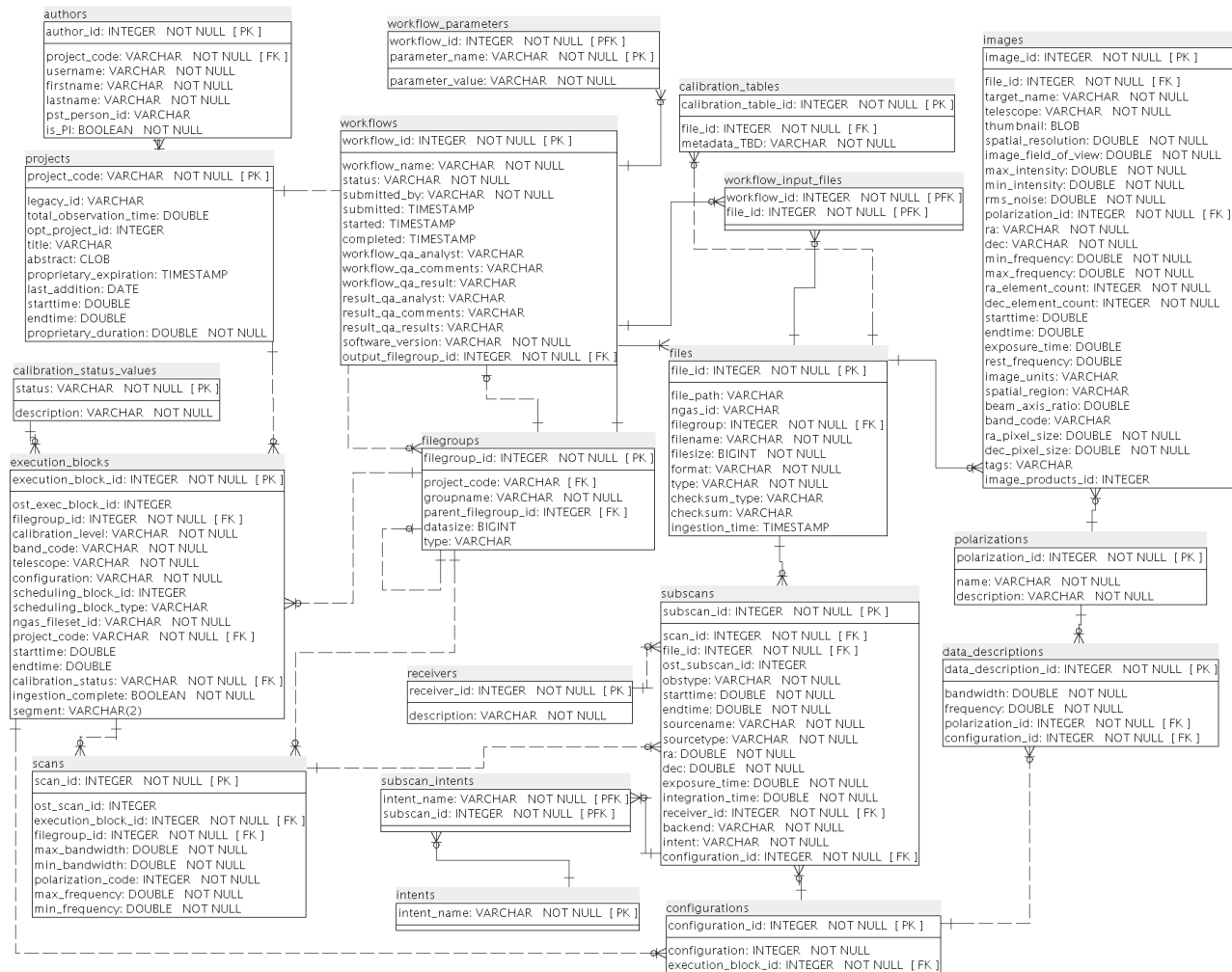


# Schema Documentation

This area will explain and document the database schema, and explain the choices made during the design.

## Schema Diagram:



## Tables:

Table Name	Description
<a href="#">account</a>	Stores Request Handler user account information.
<a href="#">account_role</a>	Connects account table to role table fro the request handler.
<a href="#">archive_log</a>	Unused request Handler table for tracking downloads; not populated
<a href="#">authors</a>	A listing of the authors of projects.
<a href="#">calibration_status_v alues</a>	A listing of the allowed values for the calibration_status field of the execution_blocks table.
<a href="#">calibration_tables</a>	not yet fully defined; will be used to store metadata about calibration tables.

<a href="#">configurations</a>	The connecting table between data descriptions and execution blocks.
<a href="#">data_descriptions</a>	A listing of the frequency, bandwidth, and polarizations used in each execution block.
databasechangelog	
databasechangelock	
datadesc	An artifact of the import process. Not used after import is complete.
events	A record of AAT/PPI events sent.
execblock_start_stop	
<a href="#">execution_blocks</a>	The highest level of science data for an observation. contains one or more scans.
<a href="#">filegroups</a>	Forms an arbitrary-level hierarchical structure between projects and files.
<a href="#">files</a>	The file-specific data for an NGAS entity. Belongs to a filegroup.
flatfiles	An artifact of the import process. Not used after import is complete.
<a href="#">image_products</a>	holds information shared among images which were created & ingested together.
<a href="#">images</a>	holds metadata about images stored in the archive.
<a href="#">intents</a>	a list of the intent_names that can be used in subscan_intents. currently empty and unused.
log_sequence	used for generating request handler request IDs
logs	A record of log messages generated by the AAT/PPI system.
new_vlba_data	An artifact of the import process. Not used after import is complete.
<a href="#">polarizations</a>	A listing of the base polarizations.
<a href="#">projects</a>	project-level data for images and observations. Contains filegroups and execution_blocks
<a href="#">receivers</a>	Currently unused.
reingestion_queue	Tracking table for keeping the AAT/PPI system up to date with ALMA observations.
reingestion_states	Complete list of states for reingestion of ALMA data into the AAT/PPI structure
<a href="#">rh_commands</a>	Lookup table containing types of commands issued for user-initiated AAT/PPI requests (i.e., those that come through the new archive UI)
<a href="#">rh_data_entities</a>	Stores data entities (files or collections of files) associated with a Request Handler request.
<a href="#">rh_files</a>	Tracks files associated with a given Request Handler request.
<a href="#">rh_operator_requests</a>	Request Handler table for tracking requests made by operators (rather than end users). <b>Unpopulated</b> in new archive presently.
<a href="#">rh_processes</a>	Tracks processes associated with a Request Handler request.
<a href="#">rh_request_parameters</a>	Stores multiple key-value pairs associated with each Request Handler request. Each time the state of a request is updated, parameter values are inserted or update.
<a href="#">rh_requests</a>	Tracks user download requests coming from the new archive UI
<a href="#">rh_requests_mediums</a>	Unused Request Handler table, meant presumably to record the delivery medium for a request.
<a href="#">rh_site_delivery_medium</a>	Unused Request Handler table, meant presumably to track details of delivery media.
<a href="#">role</a>	Lookup table for request handler roles, referenced by <a href="#">account_role</a> .
<a href="#">scans</a>	the middle level of science data for an observation. Belongs to an execution_block, and contains one or more subscans.
subscan_data_descriptions	Deprecated
<a href="#">subscan_intents</a>	
<a href="#">subscans</a>	The lowest level of science data. belongs to a scan, and points to a file.
total_file_sizes	

<a href="#">workflow_input_files</a>	the files taken as input by a workflow entry.
<a href="#">workflow_parameters</a>	a set of name-value pairs listing the arguments for a workflow entry.
<a href="#">workflows</a>	a listing of each processing job that takes in data from the archive and produces data that is stored in the archive.